

# THE HIGHLINE

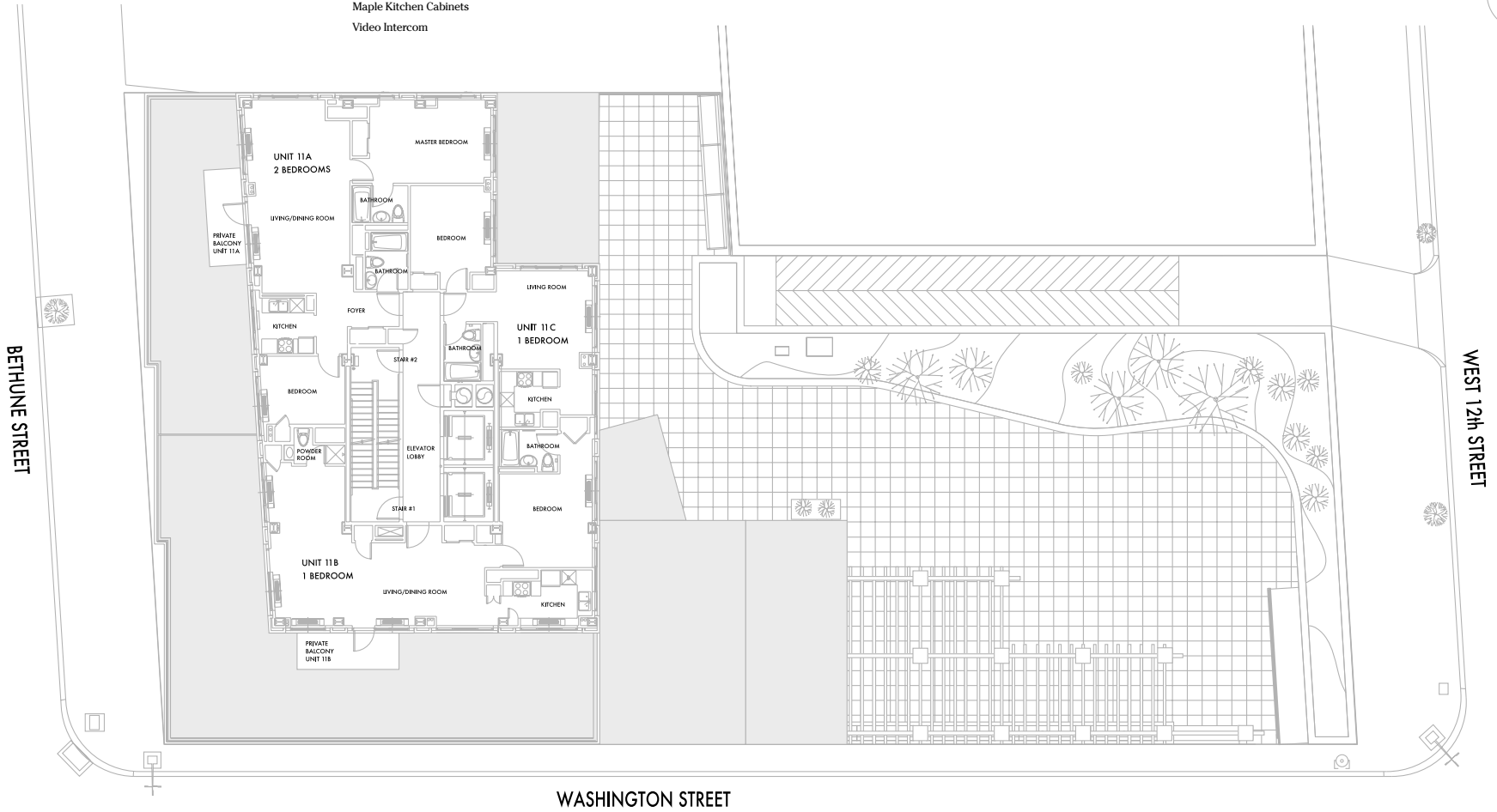
## WEST VILLAGE

**THE BUILDING**

- 24-Hour Doorman
- Elevator
- On-site Garage
- Laundry Facilities
- Spectacular Outdoor Plaza
- Designer Lobby with Terrazzo
- Marble and Natural Woods
- Unrivaled Greenwich Village, City and River Views

**THE UNITS**

- Parquet Wood Floors
- Many Setback Terraces
- High Speed Internet Wiring
- Self-Controlled Heating and Air Conditioning
- Stainless Steel Kitchen Appliances
- Dishwashers
- Built-in Microwaves
- Granite Kitchen Counters
- Maple Kitchen Cabinets
- Video Intercom



**11<sup>th</sup>**  
**Floor**

All dimensions are approximate and subject to construction variance, changes, and omissions. Plans and dimensions may also contain minor variations from floor to floor.

